

DESIGN IT RIGHT THE FIRST TIME !

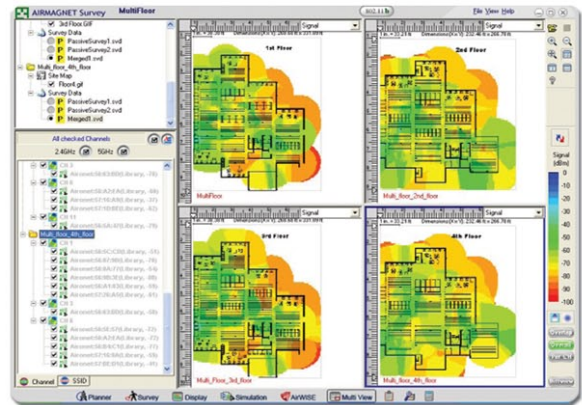
WITH AN AERCOR WIRELESS **SITE SURVEY**, YOU ONLY HAVE TO DO IT ONCE AND BE ASSURED.

Site surveys for pre-deployment and post deployment are the most effective solution to finding out exactly what is currently in your air space. With this knowledge, IT staff can proactively develop strategies to deploy and maintain a solid, secure wireless overlay to their existing network.

An Aercor Wireless Site Survey will produce graphical heat maps to give you an accurate and comprehensive representation of the existing wireless. In these heat maps, you will identify:

1. Signal coverage
2. Signal to noise ratio
3. Co-channel and Adjacent-channel interference
4. Non 802.11 interfering devices
5. Actual throughput speeds

Contact Aercor Wireless today to find out more!



Aercor uses professional tools from AirMagnet to survey your facility.

AERCOR'S PROFESSIONAL WIRELESS NETWORKING SERVICES

WLAN Design/Site Surveys - In depth site surveys and spectrum analysis to design a WLAN that will maximize performance and reliability in the available air space within your environment.

Audit/Compliance Services - In depth regulatory compliance audits for SOX, HIPAA, GLB, PCI, and many others. Providing security / vulnerability reviews and audits to help you better understand the vulnerabilities within your WLAN environment, and how to fix them.

WLAN Health Check - Health checks determine if the current settings and configurations of your WLAN are providing the optimum signal, coverage, and throughput.

Troubleshooting - Our in depth experience and knowledge of WLAN equipment and technologies allow us to help streamline and bring an outside perspective to trouble areas within your WLAN.

Application Readiness - As companies become more comfortable and reliant on wireless technologies, Aercor Wireless helps organizations assess and develop a strategic plan to ensure the success of rolling out new applications, from VoFi (Wireless VoIP) to applications that are traditionally used over LAN

Mobile User Management - Aercor is able to help you control and manage any device requiring access to data from your network so productivity doesn't suffer due to gaps in coverage and multiple networks.



WLAN Design, Site Surveys, Health Checks • Audit/Compliance Services, Security Assessments
Wireless Network Tools and Management Platform • Mobile User Security • Enterprise WLAN Infrastructure

Phone: (651) 209-7690 • Fax: 651-209-7694 • Website: www.aercor.com